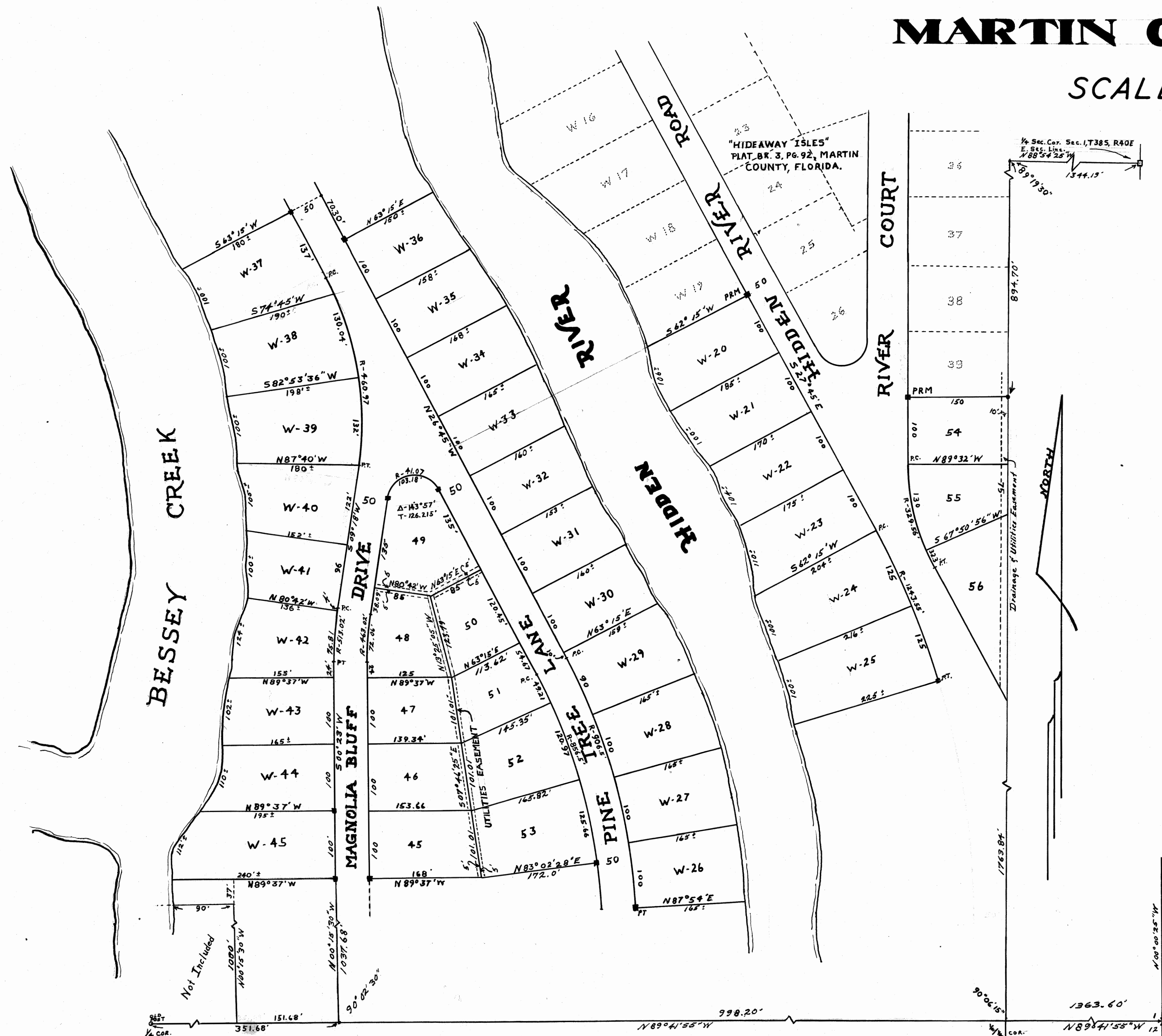


SECTION NO. 2
HIDEAWAY ISLES

A SUBDIVISION LOCATED IN SECTION 1, T 38 S, R 40 E.

MARTIN COUNTY, FLORIDA.

SCALE 1"=100'



FILED & RECORDED
 IN MARTIN COUNTY, FLA.
 1959 MAY -1 10:10:59
 DOROTHY PIERCE, CLERK
 L. E. Evans

I Hereby Certify that I have examined the attached plat and find that it complies in form with all the requirements of Chapter 177 Florida Statutes, and was this plat was filed for record at 10:59 AM this 1st day of May, AD, 1959, in plat book 3 page 113, in the office of the Clerk of the Circuit Court at Stuart, Florida.

CLERK OF THE CIRCUIT COURT
 Dorothy Pierce
 By: Isabella E. Evans, D.C.

FILE NO. 69181

DEDICATION

STATE OF FLORIDA S.S.
 COUNTY OF MARTIN

Know All Men By These Presents that "HIDEAWAY ISLES INC.," a corporation organized and existing under the laws of the state of Florida, owners in fee simple of the land subdivided as shown hereon, has caused said land to be surveyed and platted as shown hereon, and does hereby dedicate, to the perpetual use of the public the roads shown hereon, reserving however, unto its self, its legal representatives, its heirs, and assigns, the reversion or reversions thereof, whenever abandoned, by deed stipulation, or discontinued by law.

In Witness Whereof it has caused these presents to be signed by its president and its corporate seal to be affixed by its secretary this 19 day of March, A.D., 1959.

HIDEAWAY ISLES, INC.
 Walter E. Travers
 PRESIDENT
 Kathleen W. Travers
 SECRETARY

ACKNOWLEDGEMENT

STATE OF FLORIDA S.S.
 COUNTY OF MARTIN

Before Me This Day personally appeared Walter E Travers and Kathleen W. Travers president and secretary respectively, of "Hideaway Isles, Inc.," a Florida corporation, and acknowledged before me that they executed the dedication shown hereon for the uses and purposes therein stated, in behalf of said corporation.

Witness my hand and official seal this 19 day of March, A.D., 1959.

Ralph Hartman
 NOTARY PUBLIC
 My commission expires: April 15, 1959

CERTIFICATE

STATE OF FLORIDA S.S.
 COUNTY OF MARTIN

I Hereby Certify that the attached plat is a true and correct representation of a survey made under my direction, and that said survey was accurate to the best of my knowledge and belief, and that permanent reference monuments were placed as prescribed by law.

James E. Busch
 REGISTERED LAND SURVEYOR
 FLORIDA CERTIFICATE NO. 188
 Subscribed and sworn to before me this 19 day of March, A.D., 1959.
 Ralph Hartman
 NOTARY PUBLIC
 My commission expires: April 15, 1959

APPROVED

Board of County Commissioners;
 Marven St. Howell
 CHAIRMAN

STAFFORD & BROCK
 ENGINEERS
 SURVEYORS
 STUART - FLORIDA

DATE MAR. 18, 1959 Dwg. by R.E.F.